

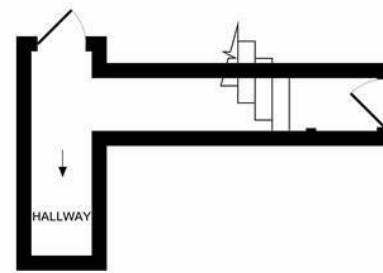


****AVAILABLE FEBRUARY 2026**** ****THREE INDIVIDUAL SHARERS PERMITTED****
****FURNISHED**** A fine example of a three bedroom upper maisonette found on Starbeck Avenue, Sandyford. Situated in a growingly popular location and walking distance to Newcastle city centre, this property boasts a very high standard finish throughout and simply must be viewed!

The accommodation briefly comprises; entrance hall on the ground floor leading to a split level stairway, providing access both externally and up to the first floor landing. There is a refitted modern kitchen/ diner, with integrated appliances including fridge freezer, electric oven & hob. There is a double bedroom on the first floor and also at the rear of the property a very spacious lounge, with dual aspect bay windows and plenty of stylish furniture. Up to the second floor you will find two more double bedrooms, both with dormer windows, as well as a plush shower room WC and amply sky lighting. Fully furnished throughout to a very high standard, with gas central heating, double glazed windows and on street permit parking. An ideal home for a group of three individual sharers!

Available 5th February 2026 | £1,450pcm | Upper Maisonette | Furnished | Three Double Bedrooms | 1,177 Sq. ft (109.3 m²) | Modern Kitchen/ Diner | Dual Aspect Lounge | GCH & DG | Walking Distance To City Centre | Permit Parking Available | Popular Location | Ideal For Group of 3 Sharers | Council Tax Band: A | EPC Rating: D

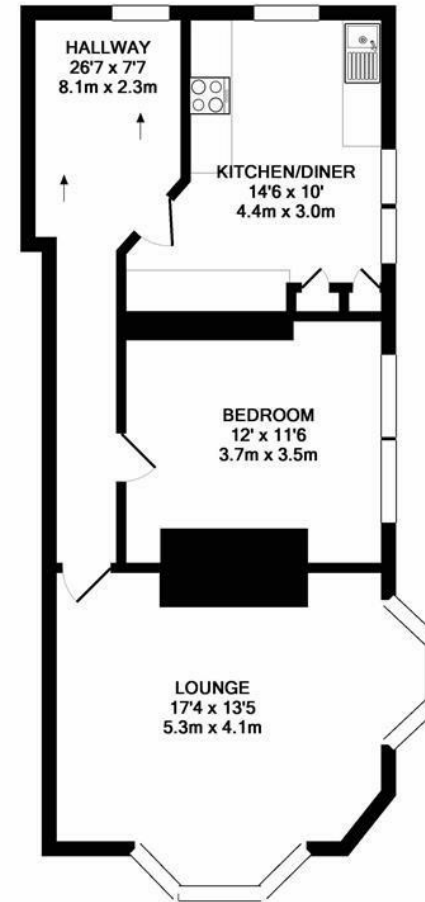
£1,450 PCM



GROUND FLOOR
APPROX. FLOOR
AREA 82 SQ.FT.
(7.6 SQ.M.)



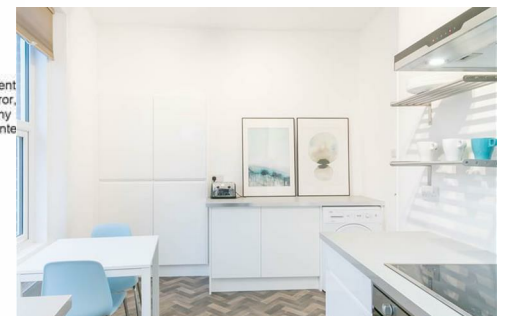
2ND FLOOR
APPROX. FLOOR
AREA 439 SQ.FT.
(40.8 SQ.M.)



1ST FLOOR
APPROX. FLOOR
AREA 655 SQ.FT.
(60.9 SQ.M.)

TOTAL APPROX. FLOOR AREA 1177 SQ.FT. (109.3 SQ.M.)

Whilst every attempt has been made to ensure the accuracy of the floor plan contained here, measurement of doors, windows, rooms and any other items are approximate and no responsibility is taken for any error, omission, or mis-statement. This plan is for illustrative purposes only and should be used as such by any prospective purchaser. The services, systems and appliances shown have not been tested and no guarantee as to their operability or efficiency can be given.
Made with Metropix ©2018



IMPORTANT NOTE: These particulars and the descriptions and measurements herein do not constitute representation and whilst every effort has been made to ensure accuracy, this cannot be guaranteed.

